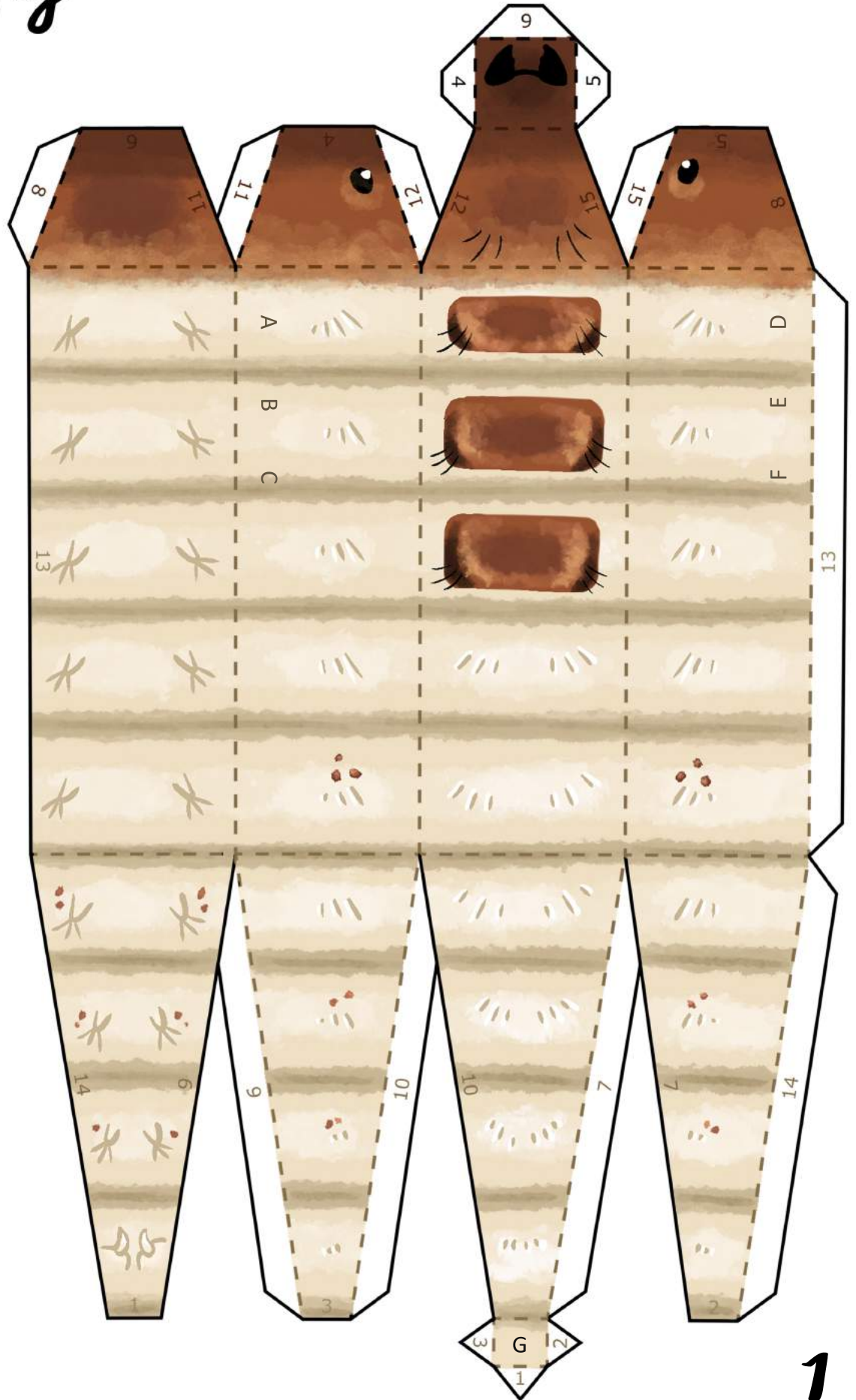
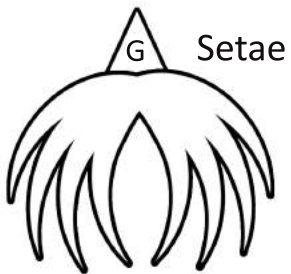
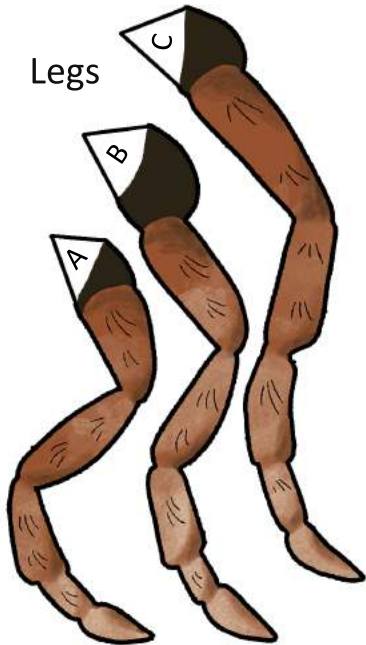
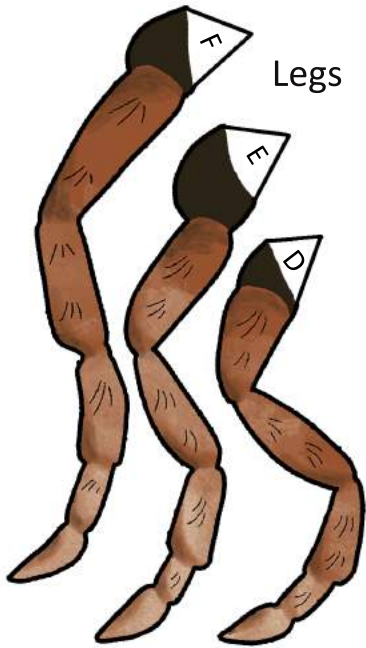


# Caddisfly

Larva

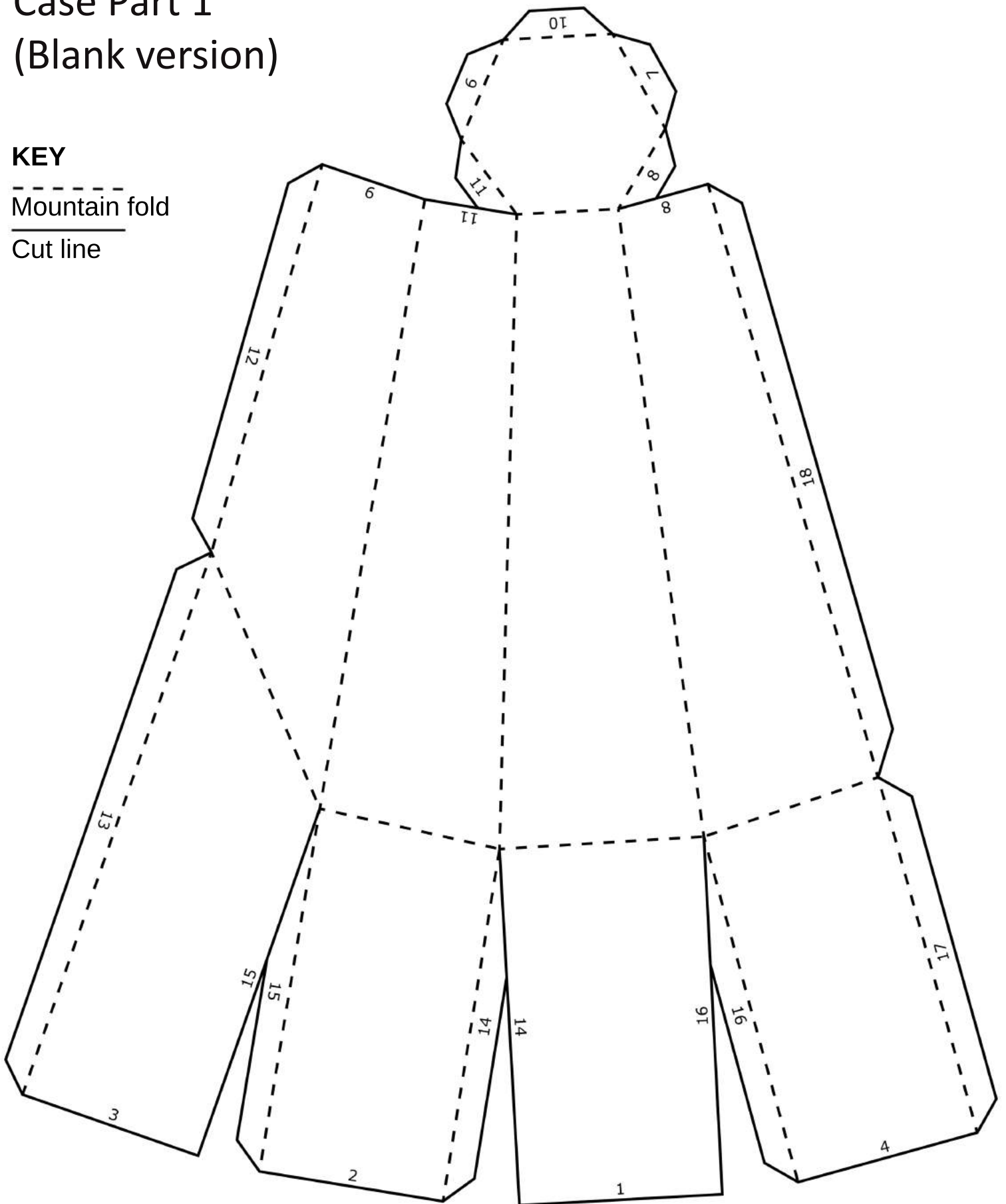


# Case Part 1 (Blank version)

## KEY

-----  
Mountain fold

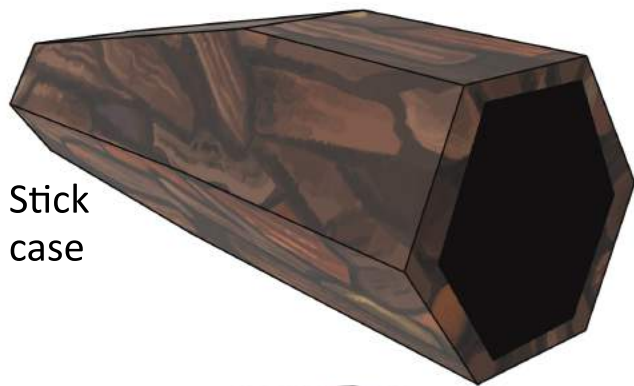
\_\_\_\_\_  
Cut line



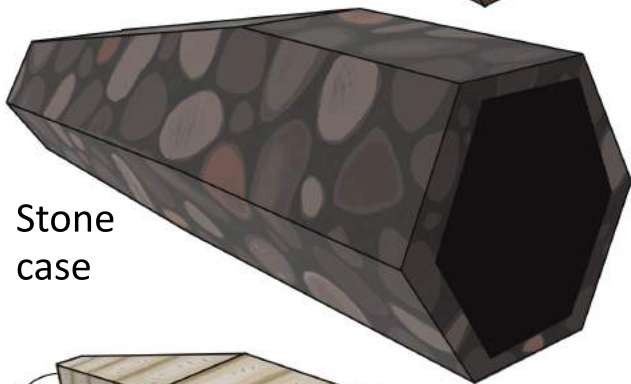
# Instructions

Materials needed: Scissors and craft glue

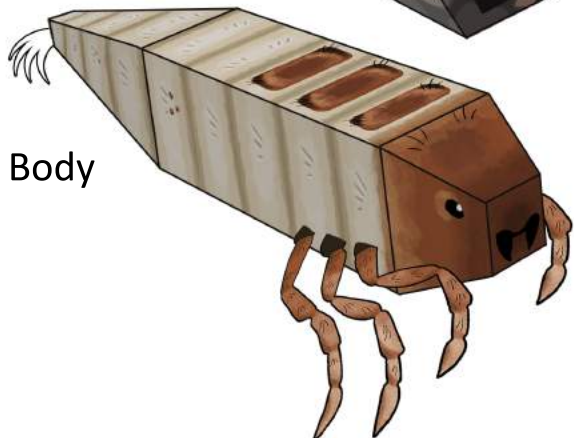
1. Cut out all pieces along black solid lines. Look at the completed models pictured below to see where all the pieces will go and how they align.
2. Construct the larva (page 1) by matching the numbers and gluing the tabs. Note that numbers for the larva and the case have separate number systems (e.g., don't glue #1 on the larva to #1 on the case). Mountain fold the triangular tabs on the legs and setae and attach to the matching letters on the body.
3. Cut out the opening for the case, then construct the case using parts 1 and 2.
4. Put the larva in the case!



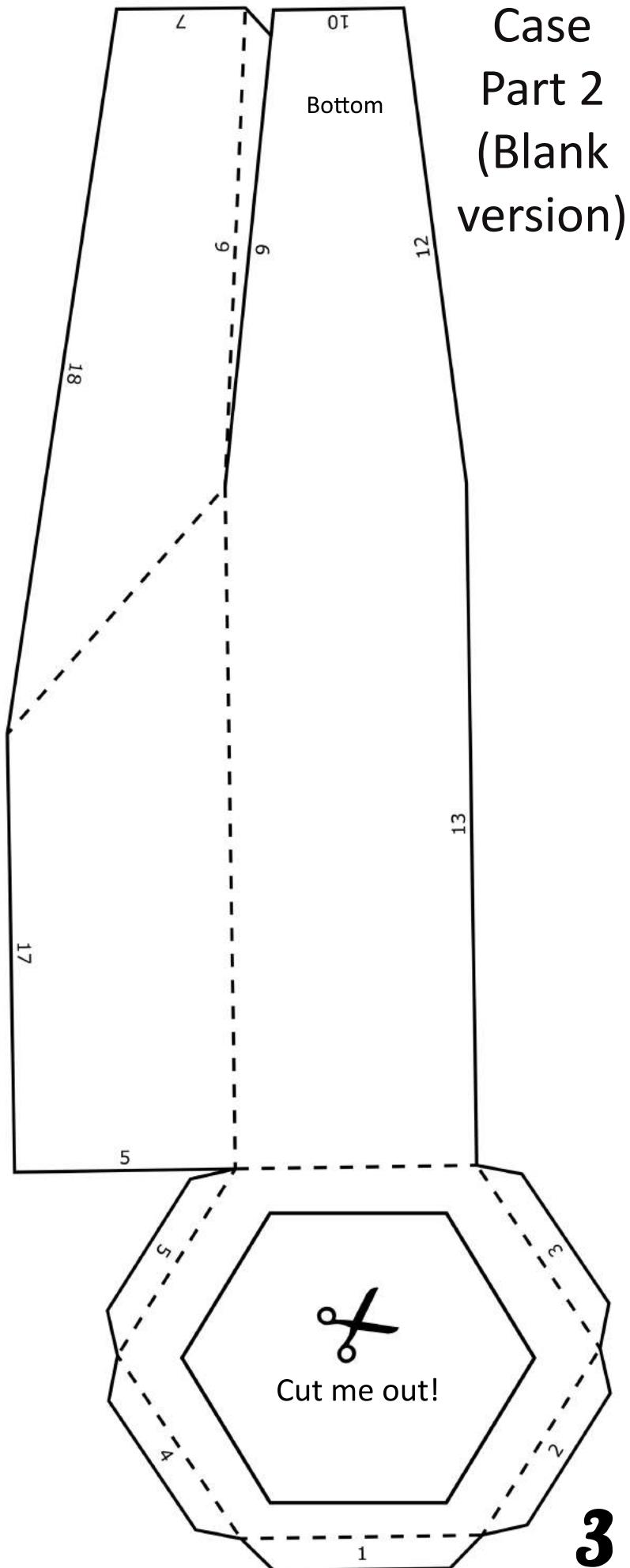
Stick case



Stone case



Body



Case  
Part 2  
(Blank  
version)